



OEKAKI   
Renaissance

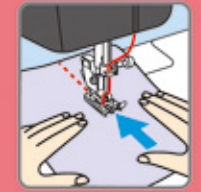


Experience 'TOYOTA's brand new 'OEKAKI' (free motion embroidery) technology that will take you to a brand new world.

OEKAKI MODE



NORMAL MODE



[www.toyotaoekaki.com](http://www.toyotaoekaki.com)

TOYOTA

1

**OEKAKI (Free motion embroidery) Function with variable width control**  
**“Oekaki” is Japanese for ‘To Draw’**

お：O = Formal Prefix  
 絵：E = Picture  
 描き：KAKI = To draw

**Brand new technology ‘Variable width Control’**

In OEKAKI (Free motion embroidery) mode, the stitch width can be adjusted by how much the foot controller is pressed. This will give you more decorative options.



2

**CPU (Computerized) machine**

Easier operation with computer regulated control (speed, width, length, etc)



3

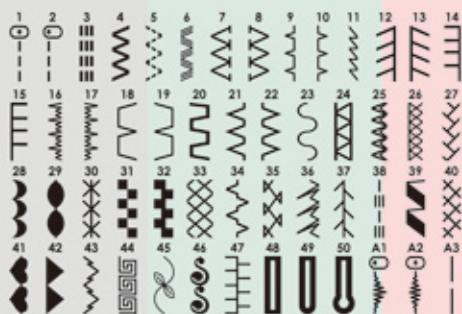
**Super Jeans Function**

Glide over 12 layers of fabric. Thick thread sewing capability.



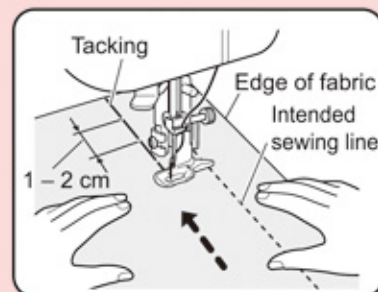
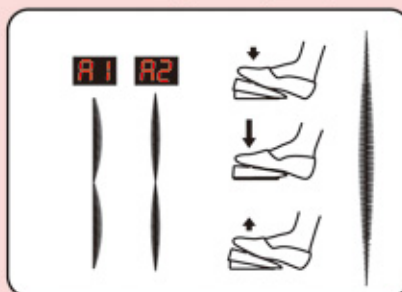
**50 Stitch Programs (Utility Mode)**

- 1 Step Buttonhole (3 options)
- Straight stitch
- Zigzag stitch
- Overcasting stitch
- Blind hem stitch
- Stretch stitch
- Decorative stitch



**3 OEKAKI Stitch Programs (OEKAKI Mode)**

- Width control by foot controller
- A1: Free motion embroidery (left needle position)
- A2: Free motion embroidery (Centre needle position)
- A3: Tacking, Temporary stitching



**Utility Features**

- Speed control buttons
- Width and length of stitch control
- Reverse sewing button
- Quick adviser for help on threading and use
- Drop feed
- Bobbin winder
- Start/Stop computerised buttons
- Needle up/down computerised button
- Digital stitch indicator
- Easy use needle threader

**Specifications**

- Maximum stitch length: 4mm
- Maximum stitch width: 5mm
- Needle position: Centre, Left
- Net Weight: 6.5 kg
- Sewing machine size: 470 x 234 x 294 mm
- Rated voltage: AC220-240V
- Rated frequency: 50Hz
- Rated power consumption: 50W
- LED light power consumption: 0.05W
- Series: OEKAKI

**Accessories**



- Zigzag foot
- Overcasting foot
- Gliding foot
- Non stick foot
- Quilting guide
- Blind stitch foot
- Invisible zipper foot
- Embroidery foot
- Buttonhole foot
- Plastic bobbins (4)
- Needle #11, #14(2), #18 (2)
- Ball point needle #11



QUICK ADVISER



STARTER KIT